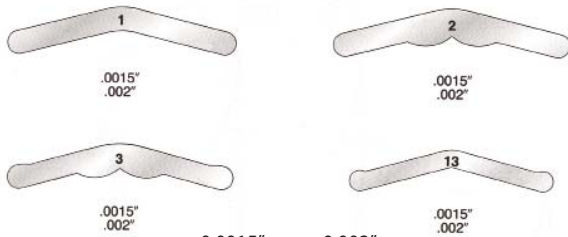


**Matrix
bands**

Tofflemire Stainless Steel Bands (JR)
144/pkg

\$4.95



		0.0015"	0.002"
1	Universal	625-1500	625-1540
2	Wide	625-1510	625-1550
3	Narrow	625-1520	625-1560
13	Pedo	625-1530	625-1570

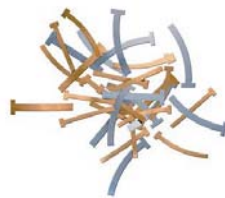
Ivory Matrix Bands (Integra/Miltex)
Stainless Steel \$3.95
Perforated Bands, 12/pkg

Bicuspid	
#11	625-0911
#12	625-0912
#13	625-0913
Molar	
#14	625-0914
#15	625-0915
#16	625-0916



T-Bands (Puldent) \$12.95
100/pkg, .002" thick

	Stainless Steel	Brass
Straight Narrow	625-1900	625-1910
Straight Wide	625-1901	625-1911
Straight Assorted	625-1902	625-1912
Curved Narrow	625-1903	625-1913
Curved Wide	625-1904	625-1914
Curved Assorted	625-1905	625-1915



Dead Soft Matrix,
Getz (Teledyne) \$8.95
.001" Gauge, 36/pkg
Adult Universal 625-2150
Adult MOD Wide 625-2151
Pedo Universal 625-2152



Fintrec Matrix Strip (Puldent)
Dead Soft, metal
Ultra thin .001"/.025mm, annealed stainless steel matrix material.
20 ft Roll 640-1050 \$69.95



**Matrix
plastic**

Mylar Matrix
Plastic for composite
100/pkg 640-1610 \$2.95
1000/pkg 640-1611 \$9.95



Matrix Dispenser (Zirc) \$22.95
Contains one roll of 3/8" x 12 yards
Matrix clear tape .002 gauge
Blue 640-6300
White 640-6301



Fintrec Matrix Strip (Puldent)
Transparent
Ultra-thin .002"/.05mm, light permeable matrix for use with light cure or self-cure composites, 59 ft Roll
640-1710 \$23.95



Directa Strips (Directa)
Dispenses one strip at a time
100/pkg \$10.95
Straight 640-1620
Curved 640-1630



DirectaDentalGroup

DIRECTA **topdental** **ORSING** **parkell**
directadental.com



Adhesives/Cements

Parkell's adhesives and cements are still relied upon for treating everything from simple bonding composites, desensitizing dentin, bonding today's popular ceramics and even repairing the most severe clinical situations.



Restoratives

Parkell manufactures key products for optimizing the success of any restorative procedure. Our R&D teams adhere to stringent manufacturing protocols to ensure that the products you choose for your practice provide reliable results every time.



Prosthetic Relines

We've put great effort to make sure that our MucoHARD, MucoSOFT and SNAP materials are durable, easy to use and predictable, while providing function and comfort for your patients.



Impression Materials

The successful outcome for many crown and bridge restorations begins with accurate impressions and bite registrations. Our complete line of standard and premium Vinyl Polysiloxane impression materials consists of different viscosities, set times and durometers for accommodating every impression need.



Endodontics

When it comes to determining pulp vitality and apex location, there is no room for inaccuracies. Every pulp tester and apex locator go through a battery of tests before they leave our facility.



Ultrasonics

Parkell remains one of the top manufacturers of magnetostrictive and piezo electric ultrasonic scalers and inserts in the world. The unsurpassed quality and performance of our scaler units and inserts has kept Parkell as the "Go To" for reliability and proven performance.

Contact matrix

Contact Matrix (Zest Dental)
 Sectional matrix system

Trial Kit #90066
 Contact rings (1 inward & 1 outward) Thin flex matrices - 50 small & 50 large
 635-2000 \$76.95



Clinical Kit #89388 635-3000 \$158.95
 Contact rings (3 inward & 3 outward) Thin flex matrices - 100 small & 100 large

Clinical Kit Plus #89439 635-3010 \$291.95
 1 Clinical Kit, Ring Plier Plus & Mega Grip forceps

Ring Plier Plus #90777 635-3020 \$71.95



Mega Grip Forceps #90486 635-3030 \$65.95



Matrix Placement Tweezers 635-3040 \$28.95



Ring Refills - 2 x inward 635-3050 \$27.95

Ring Refills - 2 x outward 635-3060 \$27.95

MegaRing Refills #91303 2 x inward 635-3070 \$44.95

MegaRing Refills #91304 2 x outward 635-3080 \$44.95



Matrices	Thin Flex	Stiff Flex	Ultra Stiff Thin Flex
Small	635-4000	635-4010	635-4020
Large	635-4001	635-4011	635-4021



Wedges

plastic

Accuwedges (Plasdent) \$6.95
 Plastic, 100/pkg
 X-Small - Blue, 10mm 640-2150
 Small - Green, 12mm 640-2151
 Medium - Yellow, 14mm 640-2152
 Large - Purple, 16mm 640-2153
 Assorted - 4 sizes 640-2154



Plastic Wedges (Almore) \$16.95
 250/pkg
 Uni-Wedge
 Regular Orange 640-2000
 Narrow Green 640-2001



Bi-Wedge
 Regular Orange 640-2010
 Narrow Green 640-2011

Fintrec Transparent Wedges (Pulpdent)
 Silver coated, advanced wedge design,
 tapers on 4 sides so that one size fits all,
 .05mm - 2mm
 640-5000 \$43.95



Palodent Plus (Dentsply) \$49.95
 Hollow underside allows placement of
 second wedge from opposite side
 100/pkg



Small 640-2015
 Medium 640-2016
 Large 640-2017

Wedges

wooden

Wooden Wedges (First Choice)
 Maplewood, natural color
 500/pkg \$24.95



Slim 640-2050
 Small 640-2051
 Large 640-2052
 Wide Base 640-2053
 Assorted 640-2054

Wizard Wedges (Waterpik)
 500/pkg \$44.95

Assorted 640-9100
 Small 640-9120
 Large 640-9140
 Wide Base 640-9150



Wizard Anatomical Wedges (Waterpik)
 400/pkg \$39.95

Small 640-9160
 Medium 640-9161
 Large 640-9162
 X-Large 640-9163
 Assorted 640-9165



Rainbow Wedges (Pulpdent)
 Starter Kit, 4 assorted sizes
 400/box 640-6200 \$34.95

Refill \$8.95
 box of 100, all one size
 Small, Blue 640-6210
 Medium, Green 640-6211
 Large, Yellow 640-6212
 X-Large, White 640-6213



Wykle Wedges (Wykle Research)
 500/box \$28.95

11mm Natural 640-8000
 13mm Yellow 640-8001
 15mm Blue 640-8002
 17mm Green 640-8003
 Assorted 640-8004



MATRIX

Wedges, Barmans (Directa)

Anatomically shaped for better & safer procedure, made from birchwood.

200/pkg		\$25.95
Mixed	640-3010	
Small	640-3011	
Large	640-3012	



Barmans Wedges, Easy Grip (Directa)

Special design provides firm holding & easy safe insertion.

200/pkg		\$25.95
Large (Easy Grip)	640-3013	



Wonder Wedges (Keystone/Bosworth)

Natural Color	100/pk	\$14.95
Small 12mm	640-2100	
Medium 13mm	640-2101	
Large 15mm	640-2102	
Extra Large 17mm	640-2103	
Assorted	640-2104	

	500/pk	\$49.95
Small 12mm	640-2105	
Medium 13mm	640-2106	
Large 15mm	640-2107	
Extra Large 17mm	640-2108	
Assorted	640-2109	



Color coded	100/pk	\$14.95
-------------	--------	---------

Blue Small 12mm	640-2110	
Green Medium 13mm	640-2111	
Yellow Large 15mm	640-2112	
Bleach Extra Large 17mm	640-2113	
Assorted	640-2114	

	500/pk	\$49.95
--	--------	---------

Blue Small 12mm	640-2115	
Green Medium 13mm	640-2116	
Yellow Large 15mm	640-2117	
Bleach Extra Large 17mm	640-2118	
Assorted	640-2119	



Wedges

specialty

Fenderwedges® (Directa)

Designed to protect adjacent teeth during class 2 preparation. 36/pkg

\$43.95

X-Small, Lilac	640-3101	
Small, orange	640-3102	
Medium, green	640-3103	
Large, yellow	640-3104	

Assorted, 144/pkg	640-3100	\$151.95
-------------------	----------	----------



Value Pack. 100/pkg

\$93.95

X-Small, Lilac	640-3106	
Small, orange	640-3107	
Medium, green	640-3108	
Large, yellow	640-3109	



Fenderwedge Prep (Directa)

Designed to protect adjacent teeth during crown preparation.

36/Pkg	640-2190	\$75.95
--------	----------	---------



Fendermate™ (Directa)

Revolutionary wedge & section matrix combined.

Assorted, 72/pkg	640-3200	\$221.95
------------------	----------	----------

Individual 18/pkg	\$65.95	
-------------------	---------	--

Left Reg	640-3201	
Left Narrow	640-3202	
Right Reg	640-3203	
Right Narrow	640-3204	

left regular

left narrow

right regular

right narrow



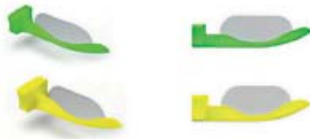
DirectaDentalGroup

DIRECTA **topdental** **ORSING** **parkell**
directadental.com



Fendermate Prime™
(Directa)

A unique combination of a preparation shield & a sectional matrix for Class II fillings of primary teeth



Assorted Kit - 36 pcs	640-2180	\$59.95
Yellow - 18 pcs	640-2181	\$64.95
Green - 18 pcs	640-2182	\$64.95

Value Pack - 100 pcs		\$274.95
Yellow - short	640-2185	
Green - long	640-2186	

(Arnel)		\$12.95
Universal Fig 1	630-5001	
Junior Fig 2	630-5002	
Senior Fig 3	630-5003	



Ivory

Matrix Retainer No 1 (FCI)		
Stainless Steel	630-1080	\$9.50



FenderMate Temp (Directa)

Designed to protect adjacent teeth during crown preparation.



18/Pkg	640-2195	\$39.95
100/Pkg	640-2196	\$167.95

Root Form (Directa)

Cervical Matrix
Simplifies filling of excavated subgingivally exposed roots



Kit	640-1640	\$45.95
15 x 6mm & 15 x 8.5mm		

Refill		
15 x 6mm	640-1641	\$26.95
15 x 8.5mm	640-1642	\$26.95



Brush&Bond UNIVERSAL

STRONGER ADHESION
and long-lasting results.

Features:

- Superior physical properties compared to other "universal" systems.
- Significantly higher bond strengths to enamel and dentin.
- Low film thickness allows deep penetration and formation of complex Hybrid Network.
- Kit includes Ea-Z-y Primer®.

WANT STRONGER BONDS?

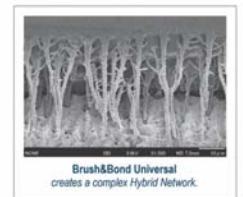
A Universal Adhesive System that may be used on dentin, enamel, ceramics (including porcelain, zirconia and lithium disilicate) and dental alloys, Brush&Bond Universal boasts impressive bond strengths by forming a complex Hybrid Network into the dentin tubules.

The adhesive's low viscosity and almost undetectable film thickness of 3 microns provides excellent coverage and desensitization without interfering with the fit of restorations.

It is compatible with self-cure, light-cure and dual-cure resin composites such as Absolute Dentin, HyperFIL, and more!

We're certain that you'll find Brush&Bond Universal an integral part of your restorative procedures.

5340 Brush&Bond® UNIVERSAL 4-Meta Universal Bonding System All includes: 30ml bottles of Brush&Bond Universal Liquid (etch/prime/bond), Tack - 30ml bottles of Ea-Z-y Primer™ ("X" and "B") plus 100 Activator Brushes.	\$105.95
5342 Brush&Bond® Universal Liquid 3rd bottle	\$105.95
5388 Ea-Z-y Primer™ Priming agent	\$98.80
5298 Brush&Bond® Activator Brushes 100 pcs	\$71.95
5297 High/Extra Brush&Bond® Activator Brushes 100 pieces Features a thicker, longer head than the standard Brushes.	\$71.95



Matrix retainers

Tofflemire

(First Choice) \$4.95

Universal Fig 1	630-1060
Junior Fig 2	630-1061
Senior Fig 3	630-1062



Fig 1 Fig 2 Fig 3



MATRIX

ABC Wedges (Zest Dental) for to restoring large class II posterior composites, solves the problem of restoring the tooth with a large open box or missing cusp.

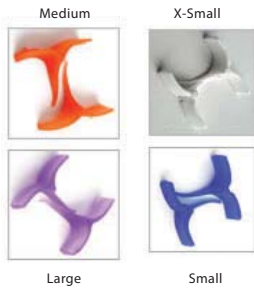


Intro Kit #93488
192 Wedges,
X-Small (24R, 24L)
Small (24R, 24L),
Medium (24R, 24L),
Large (24R, 24L),
Mega Rings (2),
Pliers (1)

640-2200 \$149.95

Refills 192 wedges of each \$57.95

X-Small	640-2201
Small	640-2202
Medium	640-2203
Large	640-2204



Contact Wedges (Zest Dental) Elastic, create ideal cervical seal, fast & easy to use, eliminate hash & ledging



Kit - Small, Medium, Large
255 pcs 640-1500 \$129.95

Refill 85/pack	\$50.95
Small	640-1501
Medium	640-1502
Large	640-1503



ZD ZEST DENTAL SOLUTIONS™

ZEST | DANVILLE MATERIALS | PERIOSCOPY

Contract Matrix™ Sectional Matrix System

- Restores natural contour
- Ideal contacts
- Minimizes finishing
- Retentive Tines
- Flat Tines
- Contoured stainless steel
- Matrices
- Occlusal offset
- Stackable



CONTACT MATRIX IS THE ULTIMATE MATRIX SYSTEM, WITH THREE IMPROVEMENTS OVER ANY OTHER MATRIX SYSTEM.

CONTACT RINGS FEATURE:

1. Converging tines to make the rings far more retentive than parallel tines.
2. Inward and outward tines for placement on either side of the cavity preparation.
3. Occlusal offset to allow stacking and also clearance over obstacles like rubber dam clamps.

Contact Matrix are contoured stainless steel to insure perfect contact and reproduce natural contour. Contact Matrices are provided in small and large sizes as well as soft and stiff thicknesses.

- | | |
|---|-------|
| TRIAL KIT | 90066 |
| • 2 Rings (1 inward& 1 outward) | |
| • Lite Flex Matrices 50 Small/50 Large | |
| CLINICAL KIT | 89388 |
| • 6 Rings (3 inward & 3 outward) | |
| • Lite Flex Matrices 100 Small/100 Large | |
| • 89477 Rev A | |
| CLINICAL KIT PLUS <small>(includes matrix)</small> | 89439 |
| • Clinical Kit, Ring Pliers & Matrix Forceps | |
| • Ring Pliers Plus 90777 | |
| • MegaGrip Forceps 90486 | |
| • Ring and Matrix refills also available | |



For a Complete List of Products & Accessories go to www.stardentalsupply.com

